



INTERNATIONAL ASSOCIATION FOR THE EDUCATIONAL ROLE OF LANGUAGE

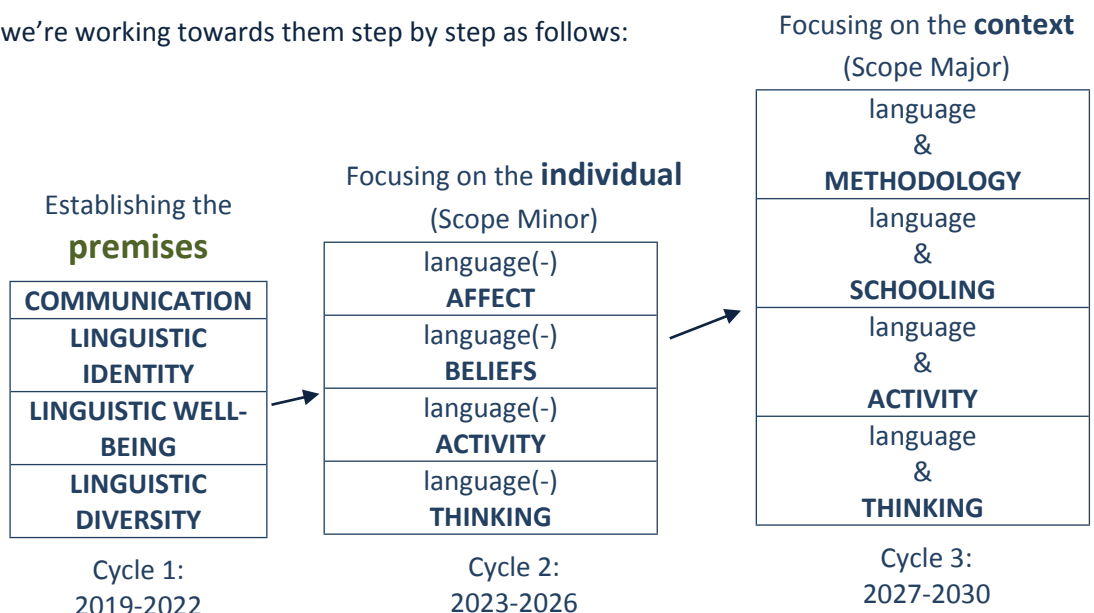
educationalroleoflanguage.org

ERLA'S TRAJECTORY

As our **overall goals** are

BOOSTING THE POSITION OF LANGUAGE IN EDUCATION & BRIDGING THE GAP BETWEEN LINGUISTIC AND EDUCATIONAL SCIENCES

we're working towards them step by step as follows:



ERLA'S CALL FOR EXPERTS

On our path we're building a community of linguistic-cum-linguistic learning experience. Feel free to JOIN ERLA AT ANY POINT OF ANY OF THE 4-YEAR CYCLES. Share your expertise and derive more of it from the other members.

ERLA is open to all those who share its premises:

- (1) **Language shapes our identity & our understanding of the world** – hence:
- (2) **All education rests on language** – hence:
- (3) **Every teacher is a language teacher** – hence:
- (4) **Language merits a special position in education.**

We welcome experts in:

- applied linguistics
- theories of education
- interaction
- bi- and multilingualism, etc.

- psycholinguistics
- neurolinguistics
- speech therapy
- non-verbal communication
- linguistic anthropology
- personal constructs
- differentiated instruction, etc.

- teaching methodology
- intercultural communication
- sociolinguistics
- ethnolinguistics
- ecolinguistics
- linguaculturalism
- cultural studies
- curriculum design
- transdisciplinary literacy
- linguistic equality
- translanguaging, etc.

Ways to contribute:

Become a member of **ERL Association**

Submit a paper to **ERL Journal**

Participate in **ERL Events**

Expand **ERL Network**